

2014



200 | 200 CONVERTIBLE





PERSEVERANCE FROM THE GROUND UP

PROMISE WITHOUT COMPROMISE. It boasts one of the most powerful V6 engines in its class. The dynamic ride and handling, outstanding V6 fuel economy and luxury content add premium comfort and convenience to your daily commute. Its elegant design distracts from the fact that this is Canada's most affordable mid-size sedan,⁽¹⁾ tastefully delivered and true to its purpose of offering affordable luxury. The demand for great value and progressive style in a mid-size sedan is the reason the Chrysler 200 not only exists, but flourishes.

HIGH-FUNCTION FORM. The Chrysler grille and badge, fascia and fender sculpting, pronounced deck lid and available dual bright exhaust tips announce its bold arrival to any scene. The standard body-colour door handles and power-heated mirrors give the bodyside a streamlined stance. A progressive windshield and front-door-glass acoustic treatment help prevent road noise from entering the cabin. With design cues to enhance the sculpted fascias, the lighting features bifunctional halogen projector headlamps that utilize high/low-beam capability for outstanding forward and spread-light performance.

AUTOMATIC STRESS RELEASE

THE VALUE OF CHOICE. Like two different power convertible tops to fit your lifestyle. A classic power cloth soft top easily folds into the trunk; making it simple to enjoy open-air driving, while an available retractable steel hard top adds the practicality of a conventional sedan. With premium interior features, an available award-winning V6 engine, and Best-in-Class⁽²⁾ cargo capacity and legroom adaptability comes standard on the Chrysler 200 Convertible.

ONE-TOUCH UP OR DOWN. In both the soft-cloth and hard top forms, the power convertible top folds in three sections and automatically latches with a switch on the centre console or the press of a button on the key fob. Each takes approximately 30 seconds to raise or retract while an automatic hard cover conceals the stowage area when the top is down.

SIMPLICITY AT ITS SMARTEST. An included Smart Glass system protects the retractable top's weather strips and window seals. It automatically lowers the windows slightly, whenever the top is lowered or when the doors are opened. When the door handle is pulled, the windows lower half an inch, preventing resistance or damage to the window or top weather strips as the door opens and closes. Once the door is closed, the window fully closes.





PERFORMANCE ENGINEERED

The Chrysler 200 driving dynamics provide an optimum balance of ride, handling and noise isolation. The front MacPherson struts and rear multilink coils allow individual articulation between front and rear wheels over varying road surfaces for a level ride. Large-diameter front and rear sway bars, stiffened body mounts and soft ride rate all pave the way for a smooth and controlled response.

283^{HP} | 6.8 L/100 KM^{HWY*}

The available 3.6L Pentastar™ V6 with Variable Valve Timing (VVT) and Flex Fuel compatibility is paired with a six-speed automatic transmission with first-rate noise, vibration and harshness (NVH) control. This award-winning engine provides an exceptional 283 horsepower, 260 lb-ft of torque and impressive fuel economy of up to 6.8 L/100 km (42 mpg) highway.* The 2.4L I-4 16-valve engine, when paired with the available six-speed automatic transmission with Auto/Stick™ features dual VVT and provides solid performance and fuel efficiency with 173 hp and up to 6.4 L/100 km (44 mpg) highway.*

*Please see pages 18-19 for full details.

BREATHING ROOM

Rise to any occasion or just leave it all behind with the adaptability that transforms your ride with the touch of a button. It's the power of superior design — the two-door convertible that comfortably seats four. Taking the engineering and design traits from its sedan counterpart, with the top down, the 200 Convertible's spacious trunk capacity still has room to easily fit two golf bags or suitcases.

The Convertible 200 S model gets an attitude treatment from the outside in. It adds an "S" badge, 18-inch polished aluminum wheels with black painted pockets and Black exterior design elements. The interior's standard robust performance leather-faced seats in black with "S" logos and distinctive silver stitching, with upgrades like a perforated leather-wrapped steering wheel, reinforce the bolstered style, while the standard 3.6L Pentastar™ VVT V6 engine with dual exhaust packs some punch to the power.





URBAN EXPRESSION

BOLD PERSONALITY. 200 Limited adds bright door handles and chrome exterior mirrors as well as 18-inch polished aluminum wheels to forge the look of luster. 200 S takes style and attitude to a new level with dual bright exhaust tips, black grille, black headlamp treatment and projector fog lamps. The black painted rear fascia insert, Black "S" badge and 18-inch polished aluminum wheels with black painted pockets complete the exterior treatment. But the beauty of the 200 S runs more than skin deep with premium leather-faced seats with suede inserts and silver accent stitching, perforated leather-wrapped steering wheel, heated front seats and more.



200 Limited shown in Light Frost

EVERYDAY INDULGENCE

200 LIMITED. High comfort, style and technology merge harmoniously with premium seating, soft-touch surfaces, sound-absorbing treatments and ambient LED lighting. The bolstered leather-faced, heated seats feature eight-way power driver adjustments. The intuitively placed controls integrated into the available leather-wrapped steering wheel allow you to operate the radio, cruise controls, available voice command⁽³⁾ features, and other vehicle functions without having to change hand or eye placement. Illuminated cup holders and classic-design details supplement the innovative conveniences like automatic temperature control, sun visors with illuminated vanity mirrors, Tire Pressure Monitoring Display, Electronic Vehicle Information Centre (EVIC) with trip computer and compass, and universal garage door opener.⁽⁴⁾



Uconnect™ is the media hub that allows you to stay connected, informed, entertained and focused on driving. Voice command⁽³⁾ allows you to use your voice to select radio stations, as well as make/receive calls and select destination entries with the available navigation.⁽⁵⁾ You'll have multiple ways to access audio, including a USB port, iPod® control with voice command,⁽³⁾ Bluetooth® Streaming Audio, and SiriusXM Satellite Radio,⁽⁶⁾ which includes a replay function. (Your first year of service is included.) The available intuitive Garmin® navigation⁽⁵⁾ can locate nearby restaurants, shopping, hospitals, or points of local interest with easy-to-understand directions, including lane guidance. The system is also clever enough to synchronize with your phone's address book⁽⁷⁾ — up to 1000 entries — every time you get into your vehicle.

*200 S CONVERTIBLE IS A
REBEL FOR
YOUR CAUSE*





SAFETY AND SECURITY IS STANDARD

ELECTRONIC STABILITY CONTROL (ESC).⁽⁸⁾

In adverse conditions, ESC and Brake Assist work with an all-speed traction control system to help maintain vehicle stability, limit oversteering or understeering, and automatically apply brake force when needed.

CRUMPLE ZONES. Specifically designed front and rear crumple zones help absorb energy and redirect it away from passengers, helping to reduce the risk of injury in the event of a collision.

AIR BAGS.⁽⁹⁾ Advanced multistage driver and front-passenger, supplemental driver and front-passenger side-seat, as well as supplemental side-curtain air bags (Sedan only) provide enhanced protection.

SENTRY KEY[®] ANTITHEFT ENGINE

IMMOBILIZER. This standard system prevents vehicle operation by disabling the engine when the encoded key is not present. Operation is automatic, regardless of whether the vehicle is locked or unlocked.

SECURITY ALARM. This system monitors the door-ajar and trunk switches as well as the ignition circuit for unauthorized entry. The lights flash and the horn sounds, alerting you if someone else is trying to enter your vehicle.

REACTIVE FRONT HEAD RESTRAINTS.⁽¹⁰⁾

The front head restraints automatically move forward and upward in the event of a rear-end collision to decrease the space between the head restraint and the occupant's head, helping to reduce the chance of injury.

REMOTE KEYLESS/ILLUMINATED ENTRY.

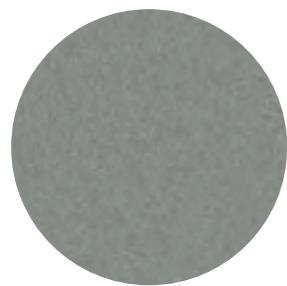
For additional convenience and security, this feature unlocks the driver's door on the first press of the key fob and all doors on the second press, illuminating interior lights once the vehicle is unlocked.

TIRE PRESSURE MONITORING SYSTEM.

A warning lamp in the instrument cluster notifies you of tires with low air pressure. The tire pressure monitoring display alerts you of individual tire pressure for all four tires and is part of the available Electronic Vehicle Information Centre.

ENHANCED ACCIDENT RESPONSE SYSTEM

(EARS). This system makes it easier for emergency personnel to see and reach occupants in the event of an accident involving air bag⁽⁹⁾ deployment by turning on interior lighting, flashing hazard lamps, unlocking doors, and shutting off the flow of fuel to the engine once the vehicle has stopped.



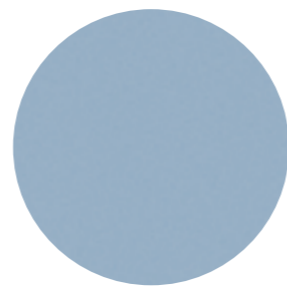
BILLET METALLIC



BRIGHT WHITE



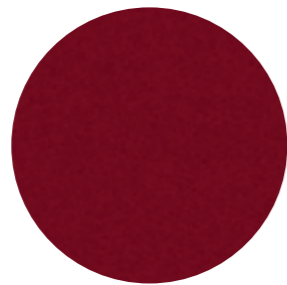
CASHMERE PEARL



CRYSTAL BLUE PEARL*



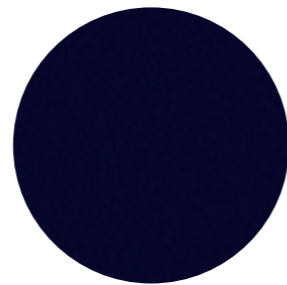
GLOSS BLACK



DEEP CHERRY RED
CRYSTAL PEARL



GRANITE CRYSTAL METALLIC



TRUE BLUE PEARL*



200 SPECIFICATIONS

Curb Weight, kg (lb)		
2.4L I-4 Engine	1544 (3403)	
3.6L V6 Engine	1622 (3576)	
GVWR		
kg (lb)	2087 (4600)	
Towing (when properly equipped)		
Towing Capacity, max, kg (lb)	454 (1000)	
Exterior, mm (in.)		
Wheelbase	2765 (108.9)	
Overall Height	1482 (58.4)	
Front Track	1567 (61.7)	
Rear Track	1594 (62.7)	
Overall Width	1843 (72.5)	
Overall Width with Side Mirrors	2121 (83.5)	
Overall Length	4870 (191.7)	
Ground Clearance	142 (5.6)	
Interior, mm (in.)		
	Front	Rear
Headroom	1017 (40.1)	975 (38.4)
Headroom with Sunroof	963 (37.9)	975 (38.4)
Legroom	1077 (42.4)	919 (36.2)
Hip Room	1336 (52.6)	1341 (52.8)
Shoulder Room	1431 (56.3)	1421 (56.0)
Volumes & Capacities		
Cargo, Rear Seat Up, L (cu ft)	385 (13.6)	
Seating Capacity	5	
Volume Index, L (cu ft)	3225 (113.9)	
Fuel Tank Capacity, L (gal)	64 (14.1)	

POWER AND FUEL ECONOMY

Based on 2014 EnerGuide fuel consumption ratings. Government of Canada test methods used. Your actual fuel consumption will vary based on driving habits and other factors. Ask your retailer for EnerGuide information.

Engine	Transmission	Horsepower	Torque (lb-ft)	L/100 km (mpg)	
				City	Highway
2.4L I-4	4-speed automatic	173	166	9.9 (29)	6.7 (42)
2.4L I-4	6-speed automatic	173	166	10.5 (27)	6.4 (44)*
3.6L VVT V6	6-speed automatic	283	260	11.0 (26)	6.8 (42)*

*As described on page 7.

200 I 200 CONVERTIBLE PACKAGE DETAILS

- “S” Appearance Package**
- 18-inch polished aluminum wheels with Black pockets
 - P225/50R18 Goodyear® tires
 - Black grille
 - Black Chrysler wing inlay
 - “S” badging on rear deck lid
 - Black headlamp treatment
 - Black fog lamp bezels
- Hands-Free Communication with Bluetooth®**
- Hands-free communication with voice command⁽³⁾
 - Auto-dimming rearview mirror with microphone
 - Bluetooth Streaming Audio
 - Remote USB port

- Sun and Sound Package**
- Power sunroof
 - Uconnect™ 430N CD/DVD/MP3/HDD
 - 6.5-inch touch-screen display
 - 40GB hard drive with 28GB available
 - Navigation⁽⁵⁾ system
 - Auto-dimming rearview mirror with microphone
 - Hands-free communication⁽³⁾ with Bluetooth Streaming Audio
 - Remote USB port

200 CONVERTIBLE SPECIFICATIONS

Curb Weight, kg (lb)		
2.4L I-4 Engine	1768 (3898)	
3.6L V6 Engine	1814 (4000)	
GVWR		
kg (lb)	2223 (4900)	
Towing (when properly equipped)		
Towing Capacity, max, kg (lb)	454 (1000)	
Exterior, mm (in.)		
Wheelbase	2765 (108.9)	
Overall Height with Soft Top	1470 (57.9)	
Overall Height with Hard Top	1469 (57.8)	
Front Track	1567 (61.7)	
Rear Track	1594 (62.7)	
Overall Width	1843 (72.5)	
Overall Width with Side Mirrors	2089 (82.3)	
Overall Length	4947 (194.8)	
Ground Clearance	142 (5.6)	
Interior, mm (in.)		
	Front	Rear
Headroom with Soft Top	984 (38.7)	939 (37.0)
Headroom with Hard Top	992 (39.0)	921 (36.3)
Legroom	1077 (42.4)	850 (33.5)
Hip Room	1339 (52.7)	1123 (44.2)
Shoulder Room	1432 (56.4)	1197 (47.1)
Volumes & Capacities		
Cargo, Top Up, L (cu ft)	377 (13.3)	
Cargo, Top Down, L (cu ft)	198 (7.0)	
Seating Capacity	4	
Volume Index, L (cu ft)	2879 (101.7)	
Fuel Tank Capacity, L (gal)	64 (14.1)	

POWER AND FUEL ECONOMY

Based on 2014 EnerGuide fuel consumption ratings. Government of Canada test methods used. Your actual fuel consumption will vary based on driving habits and other factors. Ask your retailer for EnerGuide information.

Engine	Transmission	Horsepower	Torque (lb-ft)	L/100 km (mpg)	
				City	Highway
2.4L I-4	4-speed automatic	173	166	10.3 (27)	6.9 (41)*
2.4L I-4	6-speed automatic	173	166	11.5 (25)	6.8 (42)
3.6L VVT V6	6-speed automatic	283	260	11.0 (26)	6.8 (42)*

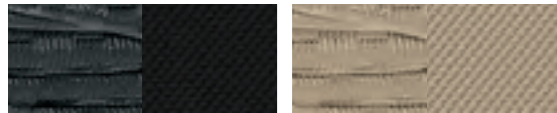
*As described on page 7.

200 I 200 CONVERTIBLE MULTIMEDIA CENTRES

- Uconnect™ 130**
- CD/MP3/AM/FM
 - Auxiliary input jack
- Uconnect 430**
- Uconnect 130 features plus:**
- 6.5-inch touch screen
 - 28GB hard drive
 - DVD format capability
 - USB port on radio
- Uconnect 430N**
- Uconnect 430 features plus:**
- Garmin® Navigation⁽⁵⁾
 - SiriusXM Satellite Radio⁽⁶⁾ with one-year subscription and SiriusXM Replay⁽⁶⁾

CHRYSLER 200 FEATURES

LX



Cloth – Black
Standard

Cloth – Light Frost
Standard

POWERTRAIN

- 2.4L DOHC 16V I-4 with 4-speed automatic
- 2.4L DOHC 16V I-4 with 6-speed automatic

INTERIOR AMENITIES

- Premium cloth seats
- Driver's height-adjustable seat
- Manual driver's lumbar adjuster
- 60/40 split-folding rear seat with trunk pass-through
- Uconnect™ 130 multimedia centre with four speakers
- Two 12-volt power outlets
- Auxiliary input jack
- Steering wheel-mounted audio controls
- Tilt/telescoping steering column
- Cruise control
- Instrument cluster with LED lighting
- Power locks
- Power windows, driver one-touch down
- Analogue clock
- Luxury front and rear floor mats
- Floor console with fore/aft slide armrest
- Instrument-panel storage bin
- Leather-wrapped shift knob
- Laminated windshield and front-door glass
- Front and rear solar-control glass, tinted
- Air conditioning and air filtering
- Outside temperature display
- Rear armrest with cup holders
- Sun visors with mirrors

EXTERIOR FEATURES

- 17-inch wheels with covers
- P225/55R17 BSW All-Season Touring tires
- Touring suspension
- Compact spare tire
- Body-colour fascia and door handles

- Body-colour power heated mirrors, manual folding
- Bi-function halogen projector headlamps
- LED taillamps

SAFETY & SECURITY

- Advanced multistage front air bags⁽⁹⁾
- Supplemental front-seat-mounted side air bags⁽⁹⁾
- Supplemental side-curtain air bags⁽⁹⁾
- Reactive front head restraints⁽¹⁰⁾
- Four-wheel disc antilock brakes
- Child seat anchor system (LATCH)
- Electronic Stability Control (ESC)⁽⁸⁾ with Traction Control
- Engine block heater
- Sentry Key® antitheft engine immobilizer
- Tire Pressure Monitoring Warning Lamp
- Keyless entry and security alarm

OPTIONAL EQUIPMENT

- Front Passenger Fold-Flat Seat
- Body-Colour Bodyside Moulding
- SiriusXM Satellite Radio with One-Year Subscription⁽⁶⁾
- Hands-Free Communication⁽⁵⁾ with Bluetooth® Streaming Audio
- 17-Inch Machined Cast Aluminum



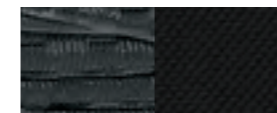
LIMITED



Leather-faced – Black
Standard



Leather-faced – Light Frost
Standard



Cloth – Black
Available



Cloth – Light Frost
Available

POWERTRAIN

- 2.4L DOHC 16V I-4 with 6-speed automatic
- 3.6L Pentastar™ VVT V6 with 6-speed automatic

ENHANCEMENTS vs. TOURING

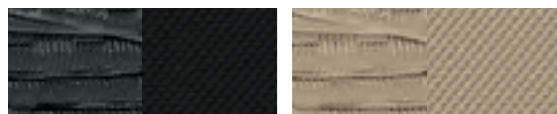
- 18-inch polished aluminum wheels
- P225/50R18 BSW All-Season tires
- Premium leather-faced seats
- Auto-dimming rearview mirror with microphone
- Bright door handles
- Chrome exterior mirrors
- Hands-free Communication⁽⁵⁾ with Bluetooth® Streaming Audio
- Power front windows with one-touch up/down
- Universal garage door opener⁽⁴⁾

OPTIONAL EQUIPMENT

- Premium Cloth Seats
- Sun and Sound Package
- Sun and NAV Package
- Six Boston Acoustics® Speakers
- Uconnect™ 430N Multimedia Centre



TOURING



Cloth – Black
Standard

Cloth – Light Frost
Standard



18-Inch Aluminum
(WPR)

18-Inch Polished Aluminum
(WPD)

POWERTRAIN

- 2.4L DOHC 16V I-4 with 4-speed automatic
- 2.4L DOHC 16V I-4 with 6-speed automatic
- 3.6L Pentastar™ VVT V6 with 6-speed automatic

ENHANCEMENTS vs. LX

- 17-inch machined cast aluminum wheels
- Remote start system
- Heated front seats
- Eight-way power driver's seat
- Automatic Temperature Control (ATC)
- Front and rear aimable LED lamps
- Projector fog lamps
- Automatic headlamps
- Tire Pressure Monitoring Display
- Leather-wrapped steering wheel
- SiriusXM Satellite Radio with one-year subscription⁽⁶⁾
- Traveller/mini trip computer
- Six speakers
- Rear assist handles
- Temperature and compass gauge

OPTIONAL EQUIPMENT

- Sun and Sound Package
- Sun and NAV Package
- "S" Appearance Package
- Body-Colour Bodyside Moulding
- Uconnect 430 Multimedia Centre
- Hands-Free Communication⁽⁵⁾ with Bluetooth Streaming Audio
- 18-Inch Polished Aluminum Wheels
- 18-Inch Aluminum Wheels



S



Leather-faced – Black with perforated suede inserts and Silver accent stitching
Standard

POWERTRAIN

- 3.6L Pentastar VVT V6 with 6-speed automatic

ENHANCEMENTS vs. LIMITED

- 18-inch polished aluminum wheels with Black pockets
- Dual chrome exhaust tips
- Leather-faced seats with suede inserts
- Perforated leather-wrapped steering wheel
- Black chrome grille
- Black headlamp and fog lamp surrounds
- Body-colour exterior mirrors and door handles
- Uconnect 430 multimedia centre
- Six Boston Acoustics speakers
- Unique "S" Chrysler wing badge
- "S" badge
- 160-amp alternator
- Engine oil cooler

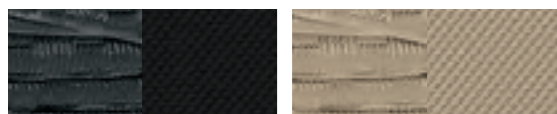
OPTIONAL EQUIPMENT

- Sun and NAV Package
- Uconnect 430N Multimedia Centre



CHRYSLER 200 CONVERTIBLE FEATURES

LX



Cloth – Black
Standard

Cloth – Light Frost
Standard

POWERTRAIN

- 2.4L DOHC 16V I-4 with 4-speed automatic
- 2.4L DOHC 16V I-4 with 6-speed automatic

INTERIOR AMENITIES

- Premium cloth bucket seats
- Manual adjustable seats
- Uconnect™ 130 multimedia centre with four speakers
- Two 12-volt auxiliary power outlets
- Auxiliary input jack
- Steering wheel-mounted cruise and audio controls
- Tilt/telescoping steering column
- Instrument cluster with LED lighting
- Power locks
- Power windows, front one-touch down
- Keyless illuminated entry
- Luxury front and rear floor mats
- Floor console with fore/aft sliding armrest
- Instrument-panel storage bin
- Leather-wrapped shift knob
- Tinted-glass windows
- Acoustic windshield and front-side windows
- Front and rear solar-control glass
- Air conditioning and air filtering
- Sun visors with mirrors

EXTERIOR FEATURES

- 17-inch machined cast aluminum wheels
- P225/55R17 BSW All-Season Touring tires
- Touring suspension
- Hard tonneau cover
- Power convertible cloth top
- Bi-function halogen projector headlamps
- LED taillamps
- Body-colour door handles
- Body-colour power heated mirrors, manual folding
- Compact spare tire

SAFETY & SECURITY

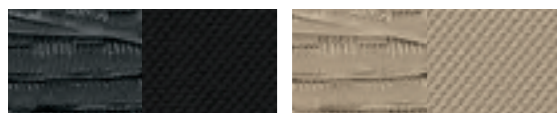
- Four air bags⁽⁹⁾
- Reactive front head restraints⁽¹⁰⁾
- Four-wheel disc antilock brakes
- Electronic Stability Control (ESC)⁽⁸⁾ with Traction Control
- Child seat anchor system (LATCH)
- Engine block heater
- Sentry Key® antitheft engine immobilizer
- Tire Pressure Monitoring Warning Lamp
- Security alarm

OPTIONAL EQUIPMENT

- Power Six-Way Driver's/Passenger Seats
- Body-Colour Bodyside Moulding
- SiriusXM Satellite Radio with One-Year Subscription⁽⁶⁾
- Hands-Free Communication⁽⁵⁾ with Bluetooth® Streaming Audio



TOURING



Cloth – Black
Standard

Cloth – Light Frost
Standard

POWERTRAIN

- 3.6L Pentastar™ VVT V6 with 6-speed automatic

ENHANCEMENTS vs. LX

- Heated front seats
- Six-way power driver/front-passenger seats
- 18-inch polished aluminum wheels
- Dual chrome exhaust tips
- Power top- and windows-down functionality on key fob
- Leather-wrapped steering wheel
- SiriusXM Satellite Radio with one-year subscription⁽⁴⁾
- Premium fog lamps
- Remote start system
- Automatic Temperature Control (ATC)
- Traveller/mini trip computer
- Six speakers
- Tire Pressure Monitoring Display
- Automatic headlamps
- Temperature and compass gauge
- Engine oil cooler
- 160-amp alternator

OPTIONAL EQUIPMENT

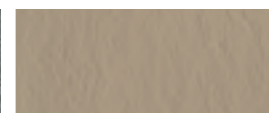
- Windscreen
- Body-Colour Bodyside Moulding
- Uconnect 430
- Uconnect 430N
- Hands-Free Communication⁽⁵⁾ with Bluetooth Streaming Audio



LIMITED



Leather-faced – Black
Standard



Leather-faced – Light Frost
Standard



Leather-faced – Pearl/Black
Standard

S



Leather-faced – Black with perforated suede inserts and Silver accent stitching
Standard

POWERTRAIN

- 3.6L Pentastar™ VVT V6 with 6-speed automatic

ENHANCEMENTS vs. TOURING

- Premium leather-faced seats
- Uconnect™ 430 Multimedia Centre
- Hands-free Communication⁽⁵⁾ with Bluetooth® Streaming Audio
- Bright door handles
- Bright front door sill scuff pads
- Chrome exterior mirrors
- Windscreen
- Auto-dimming rearview mirror with microphone
- Universal garage door opener⁽¹⁰⁾

OPTIONAL EQUIPMENT

- Six Boston Acoustics® Speakers
- Uconnect 430N
- Power Retractable Hard Top



POWERTRAIN

- 3.6L Pentastar VVT V6 with 6-speed automatic

ENHANCEMENTS vs. LIMITED

- Leather-faced seats with suede inserts and Silver accent stitching
- 18-inch polished aluminum wheels with Black pockets
- Perforated leather-wrapped steering wheel
- Unique Black grille
- Black headlamp treatment
- Black front and rear fascia insert
- Six Boston Acoustics speakers
- Body-colour exterior mirrors
- Body-colour door handles
- Unique "S" Chrysler wing badge
- "S" badge

OPTIONAL EQUIPMENT

- Uconnect 430N
- Power Retractable Hard Top



WARRANTIES 2014 Chrysler, Jeep, Dodge and Ram vehicles are backed by a 5-year or 100,000-kilometre fully transferable Powertrain Limited Warranty* with \$0 deductible plus 24-hour roadside assistance.† SRT vehicles are backed by a 3-year or 60,000-kilometre fully transferable Powertrain Limited Warranty* with \$0 deductible plus 24-hour roadside assistance. Basic Warranty coverage is for 3 years or 60,000 kilometres. * Rust-through coverage on all body sheet metal is for 3 years. The Cummins Turbo Diesel engine is protected by a separate Limited Warranty, covering the engine for 5 years or 160,000 kilometres.† The EcoDiesel engine is backed by a 5-year or 100,000-kilometre fully transferable Powertrain Limited Warranty* with \$0 deductible plus 24-hour roadside assistance.†

*Whichever comes first. Some conditions may apply. †The 5-year/100,000-kilometre Powertrain Limited Warranty does not apply to vehicles sold for certain commercial uses. See your retailer for full details.

ABOUT THIS CATALOGUE Since the time of printing, some of the information you'll find in this catalogue may have been updated. Ask your retailer for details. Some of the equipment shown or described throughout this catalogue is available at extra cost. Specifications, descriptions, illustrative materials and all competitive comparisons contained herein are as accurate as known at the time this publication was approved for printing. Chrysler Canada Inc. reserves the right to make changes at any time without notice and without incurring obligation. For the price of the model with the equipment you desire, or verification of specifications contained herein, see your Chrysler, Jeep, Dodge, Ram and SRT Retailer. Chrysler, the Chrysler wing design, 200, Jeep, Dodge, Ram, SRT, Mopar and Sentry Key are registered trademarks and Uconnect and Pentastar are trademarks of Chrysler Group LLC. © 2013 Chrysler Canada Inc. All rights reserved. Auto/Stick is a trademark of Hurst Performance. Bluetooth is a registered trademark of Bluetooth SIG, Inc. Boston Acoustics and the Boston Acoustics logo are registered trademarks of Boston Acoustics, Inc. Facebook and logo are trademarks of Facebook, Inc. All rights reserved. Garmin and the Garmin logo are registered trademarks of Garmin, Ltd. or its subsidiaries and are registered in one or more countries. All rights reserved. Goodyear is a registered trademark of The Goodyear Tire & Rubber Company. iPod is a registered trademark of Apple Inc. All rights reserved. Sirius, XM, the SiriusXM logo, channel names and logos are trademarks of SiriusXM Radio Inc. and are used under license. The Twitter logo is a service mark of Twitter, Inc. Cummins is a registered trademark of Cummins, Inc. All other trademarks, images and logos are property of their respective owners and are displayed in this publication with permission. All rights reserved.

DISCLAIMERS (1)Based on 2013 Ward's Upper Middle Sedan segmentation. (2)Based on Chrysler Canada internal standard specialty segmentation for convertibles. (3)Driving while distracted can result in loss of vehicle control. Only use mobile phones and other devices, even with voice commands, when it is safe to do so. Voice commands of phone require a Bluetooth compatible phone. (4)Not compatible with all garage door openers. (5)Never program while driving. Mapping may not be detailed in all areas or reflect current road regulations. (6)Requires SiriusXM Satellite Radio subscriptions governed by SIRIUS terms and conditions available at siriusxm.ca (7)Phone must support Bluetooth Phone Book Access Profile (PBAP). (8)No system can repeal the laws of physics or overcome careless driving actions. Performance is limited by available traction, which snow, ice and other conditions can affect. When the warning lamp flashes, the driver needs to use less throttle and adapt speed and driving behaviour to prevailing road conditions. (9)The advanced front air bags in this vehicle are certified to the federal regulations for advanced air bags. Children 12 years old and younger should always ride buckled up in a rear seat. Infants in rear-facing child restraints should never ride in the front seat of a vehicle with a passenger front air bag. All occupants should always wear their lap and shoulder belts properly. (10)Always sit properly with the head restraint properly adjusted. Never place anything in front of the head restraint.





1-800-361-3700 | CHRYSLER.CA



CHRYSLER IS A REGISTERED TRADEMARK OF CHRYSLER GROUP LLC.
52014C580E